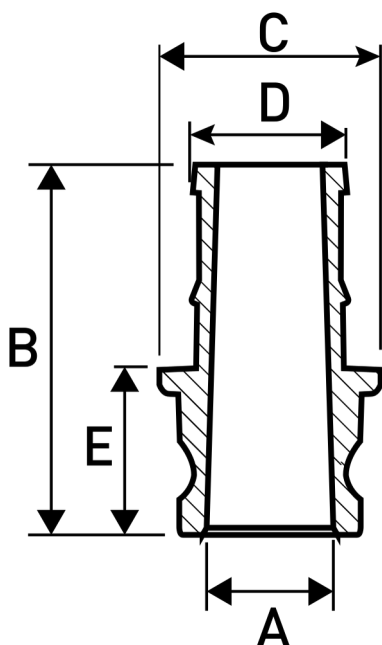


**Norma de diseño:** Federal Mil A-A-59326A  
**Material:** Acero inoxidable 304 y 316  
**Presión de trabajo:** 1/2" 150 PSI, 3/4" - 2" 250 PSI, 2 1/2" 225 PSI, 3" 200 PSI, 4"-6" 100 PSI



| Medida |     | A    | B    | C    | D    | E    | Peso |
|--------|-----|------|------|------|------|------|------|
| inch   | mm  | (mm) | (mm) | (mm) | (mm) | (mm) | (Kg) |
| 1/2"   | 13  | 14   | 64   | 29   | 15   | 29   | 0.09 |
| 3/4"   | 19  | 20   | 84   | 35   | 21   | 34   | 0.15 |
| 1"     | 25  | 25   | 93   | 38   | 27   | 37   | 0.23 |
| 1 1/4" | 32  | 28   | 104  | 49   | 34   | 46   | 0.42 |
| 1 1/2" | 40  | 36   | 110  | 58   | 40   | 49   | 0.64 |
| 2"     | 50  | 45   | 128  | 76   | 53   | 57   | 0.90 |
| 2 1/2" | 65  | 55   | 135  | 79   | 66   | 57   | 1.25 |
| 3"     | 75  | 72   | 160  | 98   | 78   | 58   | 1.77 |
| 4"     | 100 | 96   | 168  | 122  | 102  | 60   | 2.74 |
| 5"     | 125 | 120  | 193  | 162  | 126  | 71   | 4.46 |
| 6"     | 150 | 143  | 243  | 178  | 152  | 76   | 6.26 |

\* Fotos y medidas referenciales, sujetas a cambios sin previo aviso por parte del proveedor o fabricante.